

Visual Engagement Solutions for Retail





VISUAL ENGAGEMENT SOLUTIONS FOR RETAIL

Communicate your brand message and engage your customers with an elevated in-store experience. The Look Company offers a wide range of innovative visual engagement solutions for retail applications.

Lightboxes	4
Fabric and Frames	12
Modular Display Systems	14
Signs and Banners	22
Services	26

LIGHTBOXES LIGHT UP YOUR SPACE


Lightboxes are an effective way to accent furniture galleries, retail storefronts, product displays, along concourses and guest relation areas. Build lightboxes into freestanding partitions and product display units, or use them as full and half wall treatments to create unique brand environments.

LIGHTBOX SOLUTIONS

Our lightboxes are available in a wide range of sizes to meet every need, from space-saving slim designs to seamless corner lightboxes.

- ✓ 50mm (2") One-sided, Backlit
- ✓ 50mm (2") Rounded Corner, Backlit
- ✓ 50mm (2") Seamless Corner, Backlit
- ✓ 75mm (3") One-sided, Backlit
- ✓ 75mm (3") One-sided, Perimeter-Lit
- ✓ 75mm (3") Rounded Corner, Perimeter-Lit
- ✓ 100mm (4") One-sided, Perimeter-Lit
- ✓ 100mm (4") One-sided, Backlit
- ✓ 120mm (4.5") Two-sided, Perimeter-Lit
- ✓ 120mm (4.5") One or Two-sided Corner





We offer a wide range of lightbox solutions all produced to custom sizes and shapes with a variety of hanging, wall mounting or self-standing options.

50mm (2") ONE-SIDED, BACKLIT

The 50mm (2") Lightbox combines all of the benefits of an LGP with the full flexibility of the backlit LED system. The thinner profile allows the lightbox to be wall-mounted or integrated into display systems where space is at a premium.



50mm (2") ROUNDED CORNER, BACKLIT

Our 50mm (2") Backlit Lightbox is now available with rounded corners. Integrate rounded corners into wall-mounted, self-standing and hanging 50mm (2") lightbox applications.



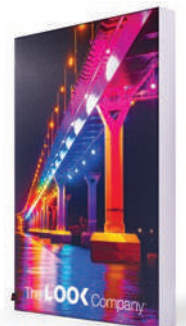
50mm (2") SEAMLESS CORNER, BACKLIT

Incorporate the 50mm (2") Seamless Corner Backlit Lightbox into your retail design for 360° continuous graphics that can be seen at every angle.



75mm (3") ONE-SIDED, BACKLIT

This thin lightbox offers a wide range of application possibilities without any installation restrictions. It is fully customizable and can easily be integrated into existing store fixtures and millwork where space is limited.



75mm (3") ONE-SIDED, PERIMETER-LIT

75mm (3") Perimeter-Lit Lightbox delivers wider, brighter, and evenly illuminated graphics, free from hotspots or shadowing.



75mm (3") ROUNDED CORNER, PERIMETER-LIT

Integrate rounded corners into wall-mounted, self-standing and hanging 75mm (3") Perimeter-Lit Lightbox applications.



100mm (4") ONE-SIDED, PERIMETER-LIT

Our standard lightbox solution is fully customizable and can be configured to any size for multiple applications. The 100mm (4") lightbox can be used in a suspended, one-sided freestanding or wall-mounted configuration.



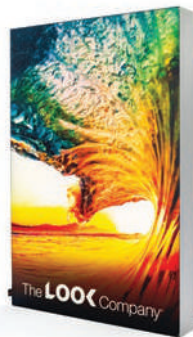
100mm (4") ONE-SIDED, BACKLIT

For larger unlimited size options, or where premium visual impact is desired, our backlit 100mm (4") lightbox provides vibrant illumination.



120mm (4.5") TWO-SIDED, PERIMETER-LIT

A double-sided lightbox with flexible power supply locations and direct power options. Freestanding or hanging, it can be used as an exhibit piece, partition, or even tabletop system.



120mm (4.5") ONE OR TWO-SIDED CORNER

Achieve a continuous 360 degree wrapped graphic with our lightbox cube or create dynamic 90-degree corners to create arches with a smooth, seamless finish on the outside of the frame.



THINNEST LIGHTBOX ON THE MARKET

Our 50mm (2") Backlit Lightbox is half the depth of a standard 100mm (4") lightbox. The thinner profile allows the lightbox to be wall-mounted or integrated into display systems where space is at a premium.



NEXT GENERATION LED LIGHTING SYSTEM

Our Next Generation LED system is available in all of our lightbox product offerings in either backlit or perimeter lit for double-sided or corner lightboxes.

The Look Company is certified under UL-48 to manufacture lightboxes. Our products bear the UL seal and meet standards applicable in the United States and Canada. Our Look-brand high-efficiency LED lights and power supplies are UL-recognized or UL-listed and are built to our exact specifications for superior performance. All of our lightboxes are built under the supervision of a UL-certified team leader, and our production facility is regularly inspected by UL. You can use our UL compliant products securely knowing that your safety is assured.

THE NEXT GENERATION LED AND POWER SUPPLY FEATURES:

- ✓ High color rendering index (CRI), providing a true white light source
 - ✓ 4 Watts per sq. ft. power consumption - 60% less compared to our first generation LEDs
 - ✓ Life expectancy - 100,000 hrs
 - ✓ Universal input from 100-240 volts AC, 50/60 Hertz
 - ✓ UL listed product
-



WARRANTY

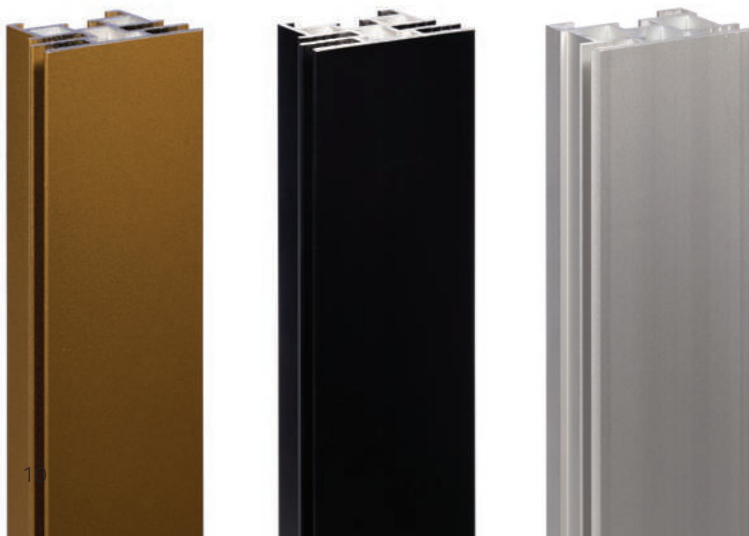
- ✓ **Hardware components**
Lifetime limited warranty on manufacturers' defect
- ✓ **Electronic components**
3-year limited warranty on manufacturers' defect

PACKAGING & INSTALLATION

- ✓ Ships knocked down for economical shipping
- ✓ Easy on site assembly and quick graphic print change-outs
- ✓ Toolless, unskilled installation design

FRAME COLOR OPTIONS

Standard color coatings - black & satin clear anodized aluminum. Custom powder coated and other finishes available.



PRODUCT COMPARISON

Product	Frame	LED	Dimensions	Applications
50mm (2")		Backlit	Custom sizes available	<ul style="list-style-type: none"> • Single-sided • Wall-mounted • Suspended • Adaptable to modular system and store fixture integration
50mm (2") Rounded		Backlit	Custom sizes available	<ul style="list-style-type: none"> • Single-sided • Wall-mounted • Suspended
50mm (2") Corner		Backlit	Custom sizes available	<ul style="list-style-type: none"> • Suspended • Freestanding • Pillar Wraps • Wall-mounted
75mm (3")		Backlit or Perimeter	Custom sizes available	<ul style="list-style-type: none"> • Single-sided • Wall-mounted • Suspended • Adaptable to modular system and store fixture integration
75mm (3") Rounded		Backlit or Perimeter	Custom sizes available	<ul style="list-style-type: none"> • Single-sided • Wall-mounted • Suspended
100mm (4")		Backlit or Perimeter	Custom sizes available	<ul style="list-style-type: none"> • Single-sided • Wall-mounted • Suspended • Self-standing
120mm (4.5")		Perimeter	Custom sizes available	<ul style="list-style-type: none"> • Double-sided • Suspended • Freestanding
120mm (4.5") Corner		Perimeter	Custom sizes available	<ul style="list-style-type: none"> • Suspended • Freestanding • Pillar Wraps • Wall-mount

VIVID FABRIC

Our new Vivid Backlit Fabric is the premier choice for visually engaging retail displays. This revolutionary fabric provides truer and bolder printed colors and is wrinkle resistant. Printed graphics can be shipped folded, saving space and shipping costs.



FABRIC AND FRAMES

Create a unified brand story throughout your environment using quality SEG fabric prints and customizable framing systems.



TENSION FABRIC GRAPHICS WITH SEG

Our tension fabric silicone edge graphics are printed through dye sublimation. Dye sublimated graphics contain a high saturation of ink in a two-stage process to lock in the bold, vibrant colors and crisp lines. Sublimated fabric prints naturally diffuse light and do not reflect other lighting so there's no surface glare. In addition, the prints with SEG stretch taut over the aluminum extrusions, providing a smooth, wrinkle-free graphic. Compared to traditional substrates, the fabric does not scratch or tear during shipping or installation, prolonging the life and quality of the graphics for the duration of use.

FABRIC & FRAME SOLUTIONS

Brand unused wall space with our low-profile frame solutions. Finishes are available in standard black and silver, and custom powder coated colors.

✓ 17mm



WALL-MOUNTED GRAPHIC TREATMENTS & SIGNAGE

A low-profile frame anchored directly to the wall surface provides a versatile graphic system that can be constructed to any shape and size. Half-wall to full-wall treatments or top-of-shelf runners can be easily anchored to the wall in any size with printed fabric graphics to communicate product information or reinforce your brand's message.

The low-profile wall-mounted frame system offers:

- ✓ Most cost-effective way to brand a wall
- ✓ Easy graphic changeouts
- ✓ Lightweight installation - can be installed on the wall with no mess or store downtime

PILLAR WRAPS

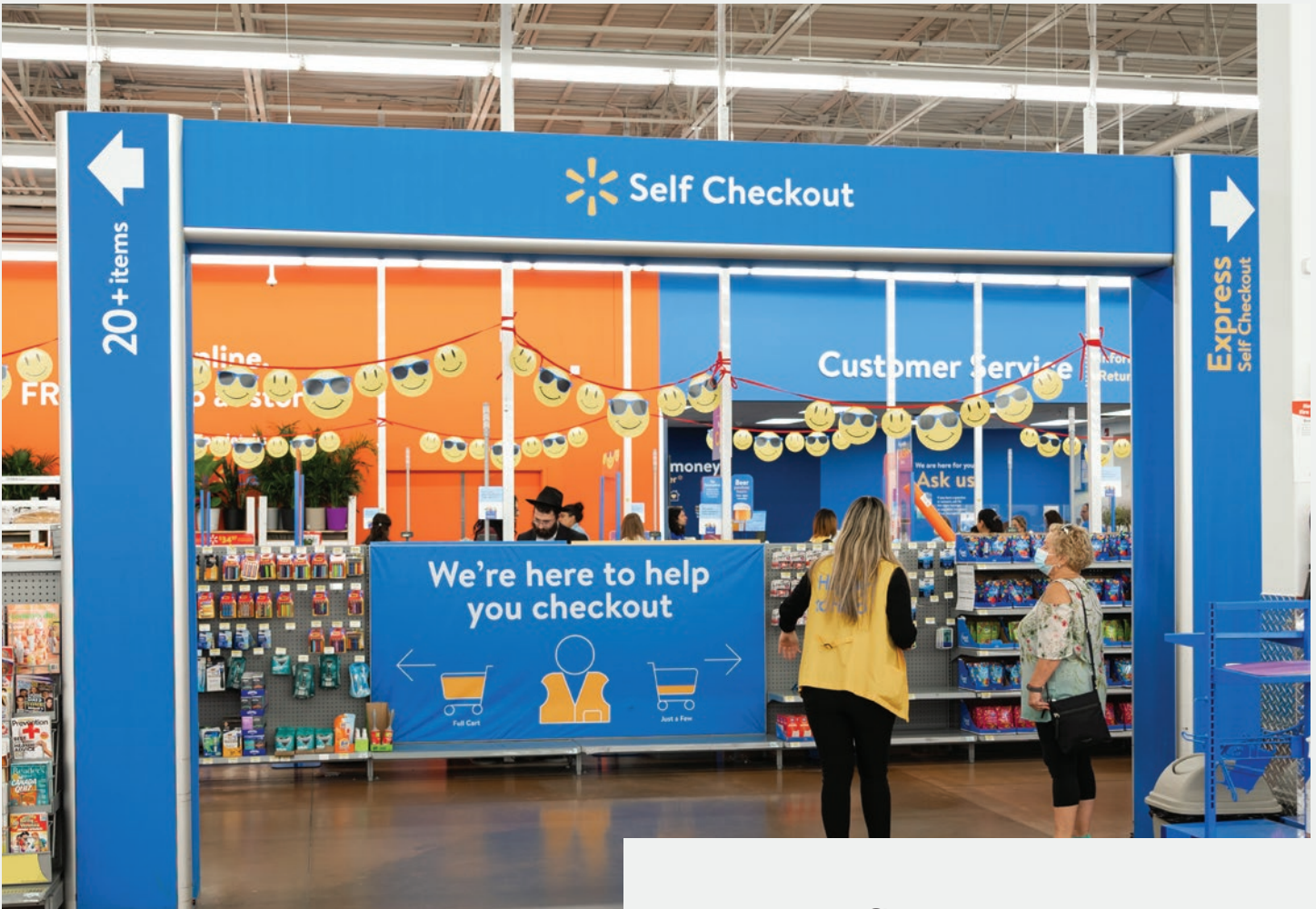
Wrap columns and pillars with lit or non-lit fabric prints for seamless branding in retail environments.



MODULAR DISPLAY SYSTEMS

Create unique branded environments with custom graphic display systems. Combine components to build walls, partitions, seamless corners, product displays, pop-ups, kiosks, booths, and so much more. Integrate lit and non-lit fabric panels or digital screens. Our system can be easily reconfigured for multiple applications.





UNLIMITED DESIGN FLEXIBILITY

The modular display system can be constructed into any configuration to create a custom graphic display system. Utilize anodized or custom colored powder-coated frames, module connectors, and printed fabric graphics, for unlimited design flexibility. Use our lightweight modular system as a cost-effective solution to enclose ceiling space with continuous graphics for wayfinding or to enhance a store's brand environment.

FEATURES:

- ✓ Modular connectors provide unlimited design flexibility
- ✓ Reusable - can be reconfigured for multiple uses
- ✓ Easy to build - no skilled labor required
- ✓ Lightweight, freestanding & movable
- ✓ Customizable graphics - can be changed in minutes

Optional bullnose corners can be added to frame edges for added safety in heavy traffic areas.



CUSTOM HARDWARE

Our hardware is designed in-house and manufactured in our North American facility. This enables us to produce custom solutions. Our modular display system is made from aluminum extrusion. Finishes are available in standard black and silver, and custom powder coated colors.

SUBSTRATES

NON-LIT:

- ✓ Fabric
 - Stretch polyester
 - Blackout

- ✓ Rigid
 - Aluminum Composite Material (ACM) (e.g. Dibond or Alumacore)
 - Acrylic (clear, translucent)
 - Polystyrene or other printable plastics

LIT:

- ✓ Fabric
 - Vivid
 - Blackout (for non-lit sides)

- ✓ Rigid
 - Acrylic (clear, translucent, printed)
 - Polystyrene or other printable plastics





CUSTOM PRODUCT DISPLAYS, KIOSKS, OR POP-UPS

Custom product display systems combine modular frames and fabric graphics to build freestanding units, kiosks, and pop-ups. Completely customizable with unlimited design flexibility to include lit, non-lit or digital components, these standalone structures can be temporary, portable, and adjustable.



MODULAR CONNECTORS

The Look Company's Modular Connectors provide unlimited design flexibility.

90° Square



Retail Standard for Freestanding Unit



Straight Hidden Connector



3-Way Connector



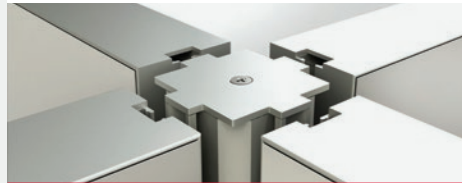
Bullnose 60° Connector



Straight 2" Post



4-Way Connector



Connector with Retail Standard (Middle)



90° Corner



Bullnose End Post



Connector with Retail Standard (End)



90° Quarter Round Connector



Square End Post



55° Corner Connector



ACCESSORIES

Customize your modular display system with The Look Company's full range of accessories. Add light integrations, millwork and powder coated finishes to create a unique brand experience.

TOPPERS

Valance Lit Header



Angled Topper



Curved Header



Straight Header



SHELVES

50mm Lit Shelf



Angled with Front Magnetic Strip



Flat with Front Magnetic Strip



Tempered Glass



Millwork



RODS

Hangrod Bracket



Hangrod with Faceouts



FINS

Fin







INTEGRATED FIXTURES

Working with existing fixtures, we can retrofit units to accommodate seamless fit graphics that are integrated within stand-alone product display hardware. Extend your messaging above fixtures with fins, toppers, or custom projecting extrusions. We offer a full range of brackets that can be mounted to most industry fixture systems.

MEDIA OPTIONS

Media applications are custom orders. Digital screens can be mounted in either lit or non-lit frames. Available surrounds include: fabric, ACM or acrylic frames. Media management software is optional.



SIGNS AND BANNERS

Incorporate signs and banners throughout your retail environment. These elements can be used in both interior and exterior spaces as wayfinding, standalone banners, floor decals and flags.





WAYFINDING & DEPARTMENT SIGNAGE

Our extrusion systems are adaptable to create not only wall and floor-mounted pieces, but can also be used to form ceiling hung identification and directional wayfinding signs. Using our lightweight frame and fabric system, displays can be large-scale and hung by standard cables along ceiling rafters. Built-in fasteners provide precise leveling for future adjustments.



BANNER STANDS

Add free-standing banner stands to displays for temporary promotions or event branding.



FLAGS & BANNERS

Build awareness for brands and advertisers, identify parking areas or entrances through highly-visible printed fabric flags and banners. Our patented flag and banner mounting system can be retrofitted onto existing light standards or flagpoles.

FLOOR DECALS

Utilize a combination of high strength pressure sensitive vinyl and non-slip laminate to resist daily wear and tear through high traffic areas. Used in areas such as mall entrances, retail concourses, aisles and food courts.



3D LETTERS & LOGOS

Increase brand awareness and engage customers with 3D letters, logos and shapes. Available in a wide variety of materials, custom colors, shapes and sizes with a maximum thickness of 2" (50mm).

MATERIALS

- ✓ Dibond / Alucobond
- ✓ Acrylic (coloured or clear)
- ✓ Foam
- ✓ Composite Foam Board including foam coated with cardboard, aluminum, etc
- ✓ MDF (wood particle board)



SERVICES

We offer a full range of integrated services from in-house design to project management and installation.

Concept Development

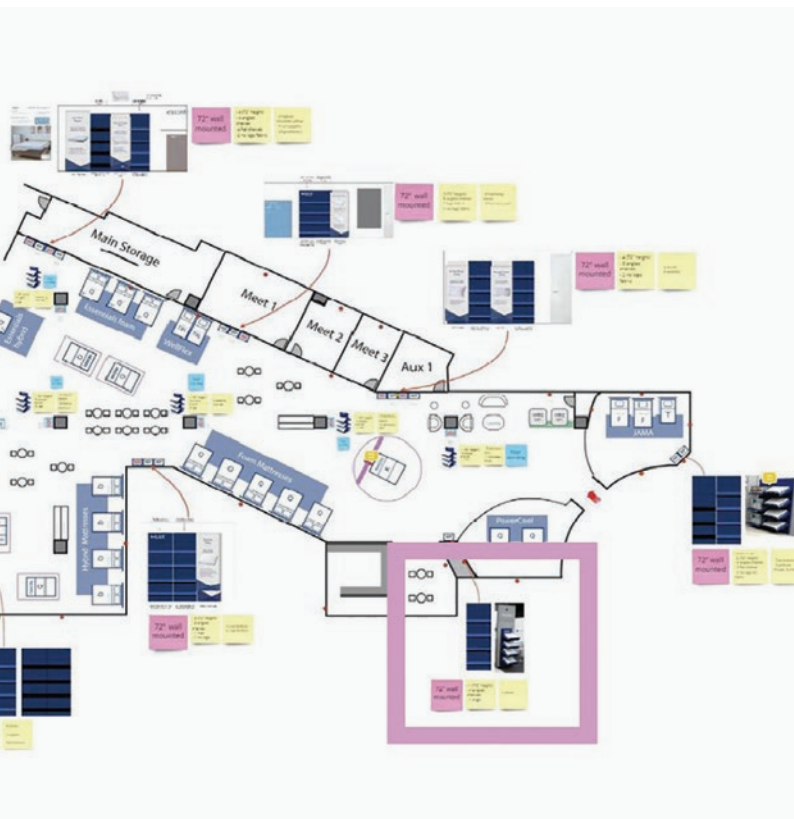
Our concept development team are seasoned experts in crafting unique brand solutions for both retail and sport environments.

- ✓ Ideation process
- ✓ Visualization planning
- ✓ Stakeholder collaboration

Design & Planning

Our designers audit your space and recommend the best solutions to engage your audience and elevate your brand's experience.

- ✓ Creative design
- ✓ Location plan drawings
- ✓ Product design & prototyping
- ✓ Technical CAD shop drawings



Project Management & Installation

Our dedicated project managers are located on site at our manufacturing facilities. They can coordinate the entire project from start to finish to ensure quality deliverables, on-time and at scale.

Installation Services

- ✓ Network of experienced installers
- ✓ Anywhere across North America
- ✓ Installation instructions and videos
- ✓ Scoping & surveying
- ✓ Engineering
- ✓ Stakeholder liaison
- ✓ Designated project manager assigned to your account
- ✓ Digital content management system
- ✓ Campaign management platform

4.2

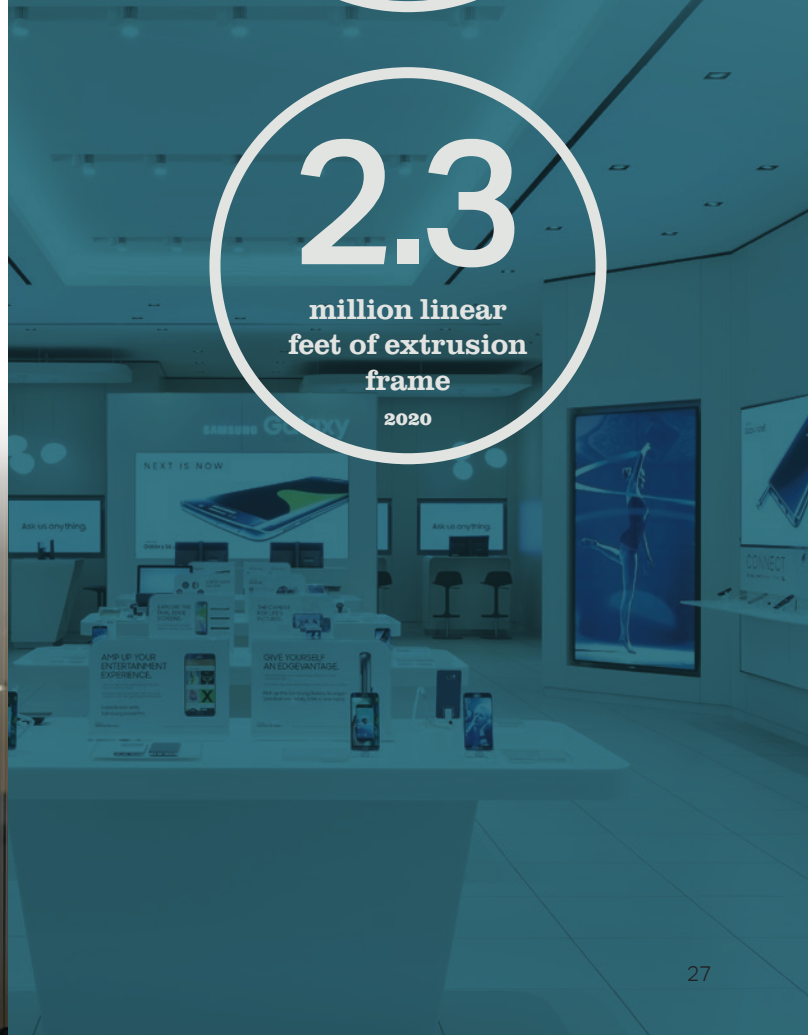
million sq. ft. of digital printing
2020

3.3

million linear feet of kedar finishing
2020

2.3

million linear feet of extrusion frame
2020



WHO WE ARE

The Look Company transforms environments by delivering extraordinary visual engagement solutions to inspire brand experiences. For over 20 years, we have been perfecting our digital printing processes and have won multiple international awards for print quality.



The Look Company is a G7® Master Certified Facility which confirms our commitment to provide our customers with the best results in color management and print consistency. With offices in North America, the Middle East, and Europe, The Look Company applies the same commitment to print quality anywhere in the world.

As an award-winning print partner, we produce industry-leading graphics and display systems for trusted brands such as Samsung, Under Armour, Skechers, Home Hardware and Walmart. In addition, our products fill multiple sports stadiums as the provider of branding at The Olympics, Major League Baseball events, National Hockey League games, and several other diverse world championships.









The **LOOK** Company®

1.866.979.8326 | thelookcompany.com

USA • Canada • France • Qatar • Philippines

MKCRPG